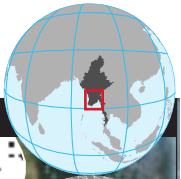
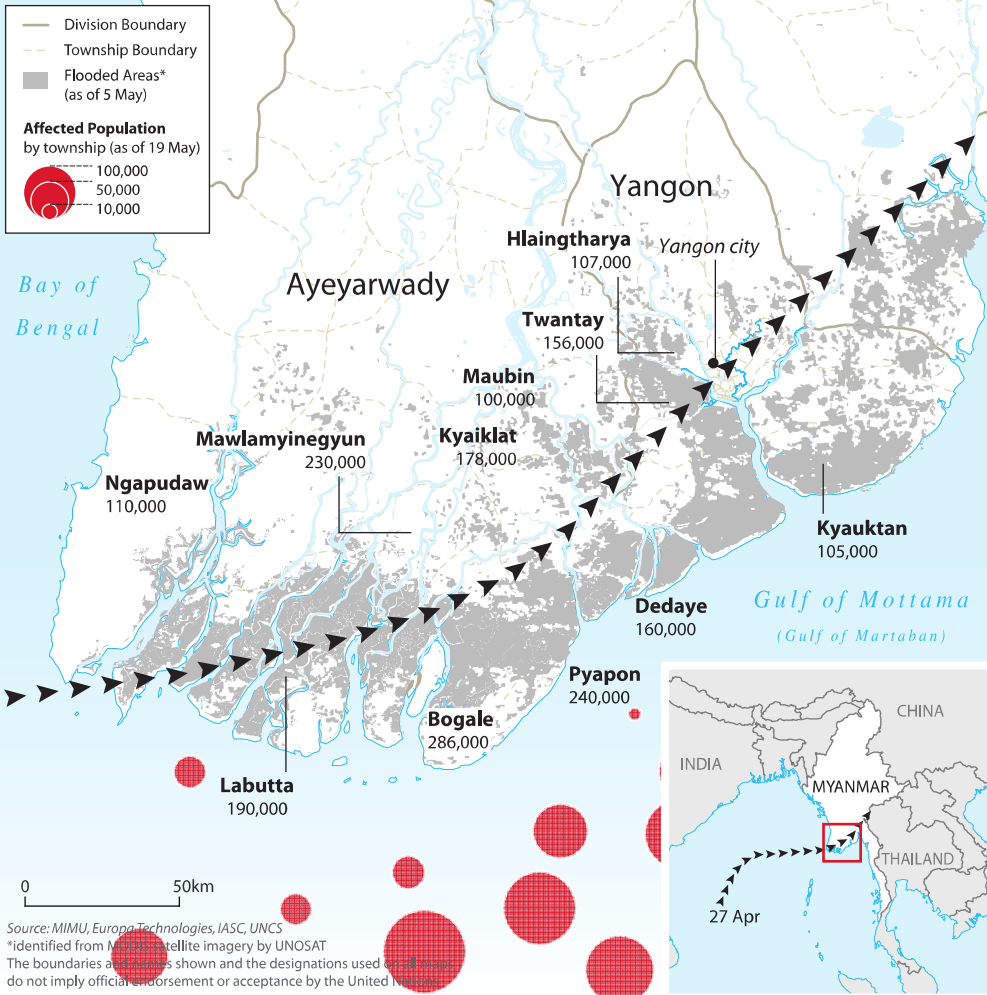


Myanmar: Cyclone Nargis - Humanitarian Profile (Jul 2008)



Flooded Areas and Affected Population (as of 13 May)



• **Cyclone Nargis** struck Myanmar on 2 and 3 May 2008, with winds up to **200 km/h**, affecting more than **50 townships**, mainly in **Yangon** and **Ayeyarwady** divisions and the country's largest city **Yangon**.
• Nargis was the **worst natural disaster** in the history of Myanmar, and the **most devastating cyclone** to strike Asia since 1991.

• The disaster caused widespread destruction; **near-total destruction** of fields and shelter in areas that were directly hit by the cyclone, in addition to downed power and communication lines and other loss of infrastructure.
• A large number of water supplies were contaminated and food stocks damaged or destroyed.

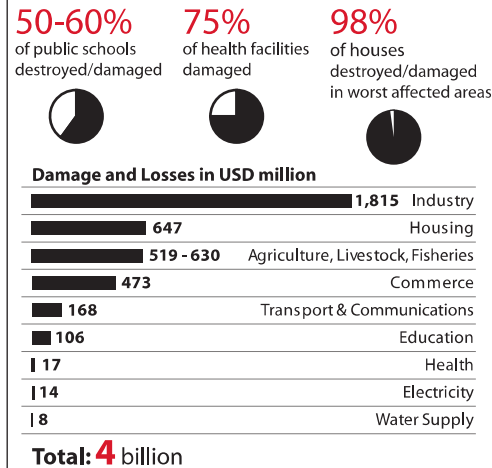
Human Toll (as of 11 May 2008)

Population in affected townships (est.):
7,350,000
Severely Affected Population (est.):
2,400,000
Displaced:
800,000
Dead:
84,537
Missing:
53,836
Injured:
19,359

Source: Post-Nargis Joint Assessment

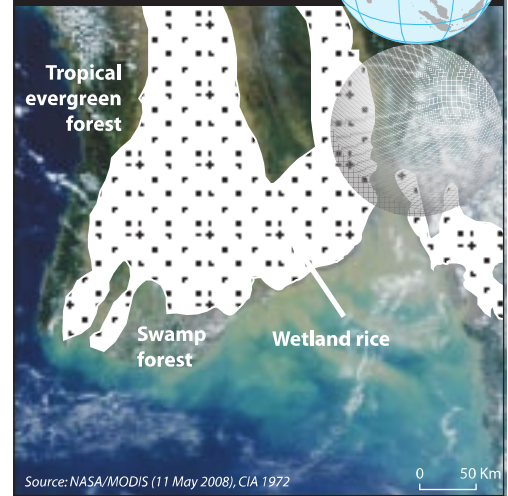
- **One-third** of the population was **severely affected** by the cyclone.
- Assessments indicate that **more women** than men died, distorting social structures.
- Some **260,000** people living in camps or settlements throughout the delta in the initial days after the cyclone.

Damage and Losses



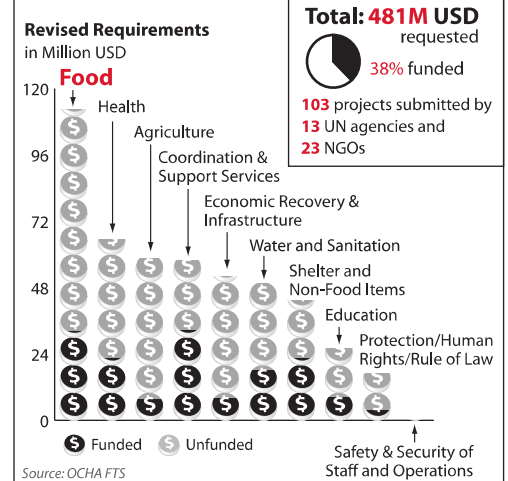
- Value of **damages** (destruction of physical assets by the disaster) represent **43%** of the total effects of the disaster.
- **Losses** (reduction in economic activity after the cyclone) amount to **57%** of the total.
- Value of damage and losses is equivalent to **21%** of the country's **GDP** in the previous fiscal year.

Region Overview



- The cyclone-affected area of the Ayeyarwady delta covers some **23,500 km²**, almost **half the size of Denmark**.
- Damage was most severe in the delta region, also known as the country's rice bowl, where the effects of extreme winds were compounded by a 3.6 metre storm surge, **devastating most of the fertile areas**.

Flash Appeal 2008 (as of 16 Jul 2008)



- Launched on **9 May**, the Flash Appeal originally requested USD **187M** to carry out emergency relief activities over a **six-month** period (OCHA).
- Based on the results of assessments and a more complete analysis of humanitarian needs, the revised Flash Appeal required **481M** to assist **2.4 million** people, with a planning horizon until **Apr 2009** (OCHA).